

UNXE238 CORP.

Press Release | April 28, 2026

UNXE238 Notes Maiden NI 43-101 Mineral Resource of 6.36 Million Pounds U3O8 at Duck Creek Uranium Project, Wyoming

El Paso, Texas, April 28, 2026. UNXE238 Corp. (“UNXE238” or the “Company”), a private U.S. uranium exploration and development company, refers to the April 23, 2026 announcement by **Noble Plains Uranium Corp. (TSX-V: NOBL; OTCQB: NBLXF; FSE: INE0)** (the “Operator”) of a maiden mineral resource estimate prepared in accordance with NI 43-101 standards on the **Duck Creek Uranium Project** (“Duck Creek” or the “Project”) in Converse County, Wyoming. UNXE238 originated and assembled the Duck Creek land package before optioning the Project to the Operator under a Property Option Agreement effective June 13, 2025, pursuant to which the Operator may earn up to an 80% interest over three years through staged share issuances and cash payments to UNXE238. Upon full exercise of the option, a joint venture would form with UNXE238 holding a 20% interest. UNXE238 also holds a net smelter returns royalty on future production from the Project.

Maiden Resource Highlights (as reported by the Operator, April 23, 2026)

- Indicated Resource of 5.32 million pounds U3O8 and Inferred Resource of 1.04 million pounds U3O8, for a total NI 43-101 compliant resource of approximately 6.36 million pounds U3O8, delivered approximately eight months after option close.
- Average grade approximately 30% above and Grade x Thickness (“GT”) approximately 40% above the upper limit of the August 2025 WWC Engineering Exploration Target across the mineralized zone.
- Additional Exploration Target of 941,000 to 1,021,000 tons grading 0.020% to 0.052% U3O8 along approximately 2.75 miles of untested strike on the expanded claim block.
- Fort Union Formation, the principal host at neighbouring deposits, remains untested at depth and represents a further growth vector beneath the Wasatch.
- Project located between producing and development-stage uranium assets held by Cameco Corporation and Uranium Energy Corp.

<u>Resource Classification</u>	<u>Average Grade(%U3O8)</u>	<u>Average GT</u>	<u>Tons(000s)</u>	<u>U3O8 (Mlbs)</u>
Indicated	0.06	0.78	4,290	5.32
Inferred	0.09	1.16	839	1.04

Background

UNXE238 originated Duck Creek through a systematic land screening, claim assembly, and historical data compilation programme covering approximately 4,160 acres of State and Federal mineral ground in Converse County. The Company's technical team reviewed 3,508 historic Kerr-McGee Corporation drill holes from the pre-1980s era and built a geological model identifying the Wasatch Formation as the primary near-term target and the Fort Union Formation as a deeper secondary objective. That work supported the August 2025 WWC Engineering Exploration Target, which the maiden resource has now exceeded on both grade and GT.

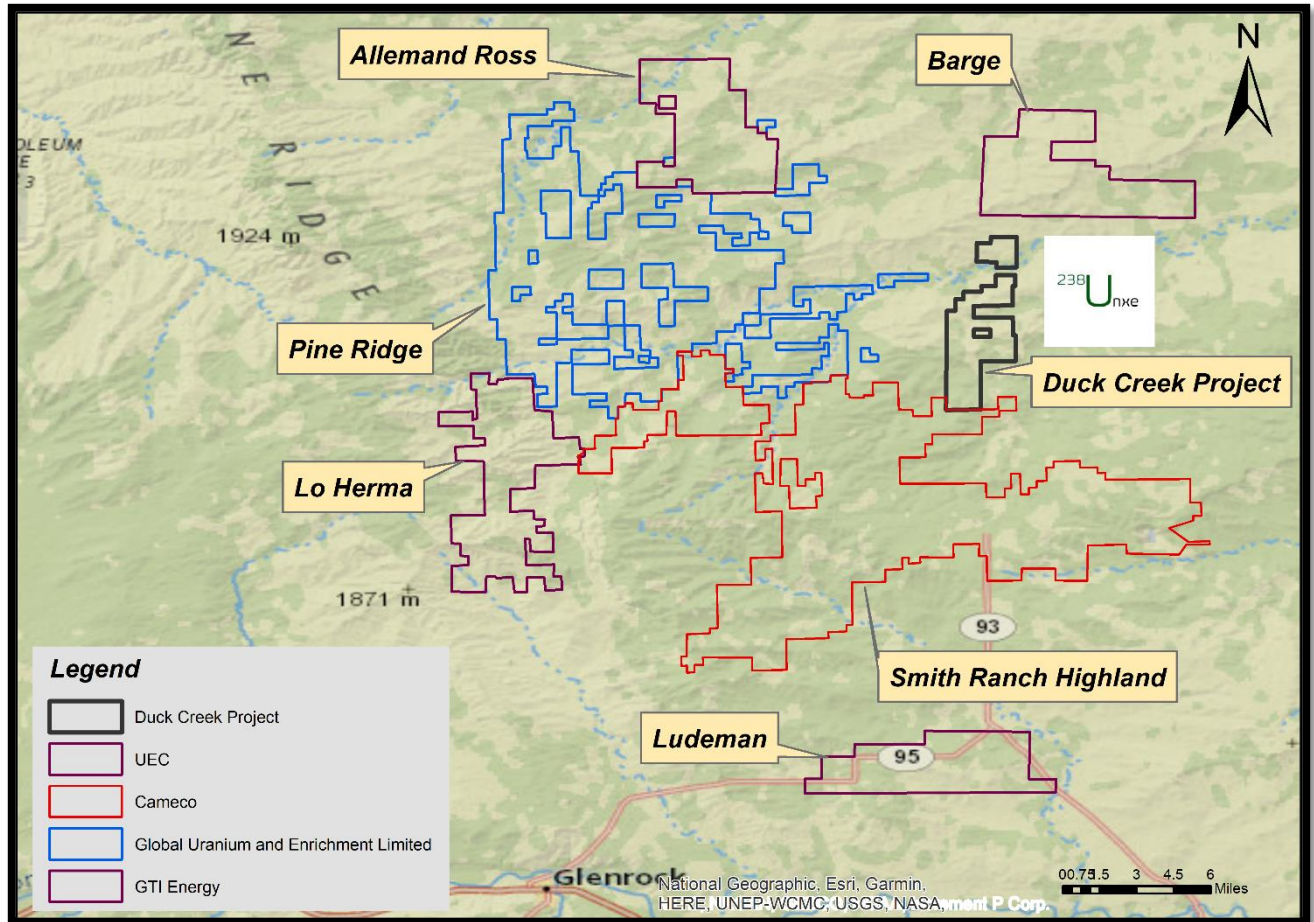


Figure-1: Strategic position of Duck Creek Project

Comment from the Chairman UNXE238 Corp.

"We originated Duck Creek with a clear geological thesis and a structured land package built off decades of historical data. The maiden resource of approximately 6.36 million pounds U3O8 inside eight months of option close validates that work, with grades and thicknesses outperforming our prior target and clear growth potential along 2.75 miles of untested strike and at depth in the Fort Union Formation," said Munazzam Ali Mahar, Chairman, UNXE238 Corp.

Resource Estimate

The mineral resource estimate was prepared by WWC Engineering of Sheridan, Wyoming, with Christopher McDowell, P.G., acting as the independent Qualified Person under NI 43-101. The estimate was derived using the GT Sum Contour Method, applying a grade cutoff of 0.020% eU3O8, a GT cutoff of 0.20, and a one-foot minimum intercept thickness; all reported resources occur below the static water table. The full technical report is expected to be filed on SEDAR+ within 45 days of the April 23, 2026 announcement.

Path Forward at Duck Creek

The Operator has indicated additional drilling is planned for 2026, targeting conversion of the Exploration Target into classified resources, extension of the mineralized strike length beyond the current 2.5 mile drilled footprint, and initial testing of the Fort Union Formation at depth. A geophysical targeting collaboration with the University of Wyoming on Fort Union roll fronts has also been announced for the summer field season.

Wyoming Uranium Pipeline

Duck Creek represents proof of concept for UNXE238's exploration model. The Company is currently advancing additional uranium exploration projects across Wyoming's principal uranium basins, applying the same screening, claim assembly, and technical evaluation process. Further announcements are expected as evaluation work advances toward public disclosure.

Market Context

The U.S. nuclear fleet consumes approximately 45 to 50 million pounds of U₃O₈ per year against limited domestic primary production. Wyoming is the leading U.S. uranium producing state and the established home of commercial in situ recovery ("ISR") operations in North America. Duck Creek lies along the Powder River Basin uranium corridor that hosts Cameco's Smith Ranch-Highland complex and Uranium Energy Corp.'s regional development pipeline.

About UNXE238 Corp.

UNXE238 Corp. is a private U.S. uranium exploration and development company focused on Wyoming's principal uranium districts. The Company's strategy is centred on identifying historically drilled brownfield projects with near-term development potential and exploration upside.

For further information regarding the Duck Creek Uranium Project, or to inquire about UNXE238's other Wyoming uranium exploration projects, please contact:

On behalf of UNXE238 Corp.
"Munazzam Ali Mahar"

Munazzam Ali Mahar
Chairman UNXE238 Corp.
Email: info@unxe238corp.com
Website: www.unxe238corp.com

Forward-Looking Statements

This news release contains forward-looking statements regarding the Duck Creek Uranium Project and UNXE238's uranium exploration activities. All resource figures, exploration targets, and technical information relating to Duck Creek referenced herein are as reported by Noble Plains Uranium Corp. on April 23, 2026. Mineral resource estimates, and in particular inferred resources and exploration targets, are inherently uncertain. Forward-looking statements are subject to risks and uncertainties outside the Company's control, including commodity prices, exploration outcomes, and permitting and regulatory matters. Readers are cautioned not to place undue reliance on these forward-looking statements.